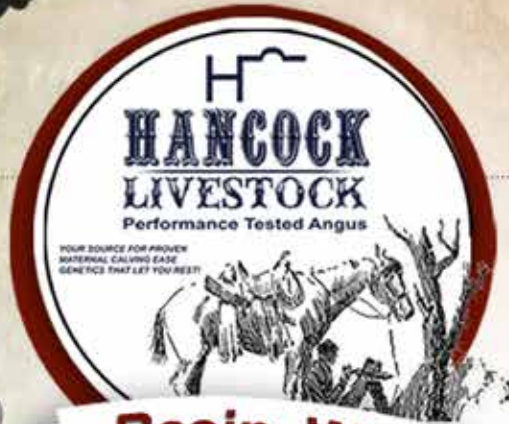
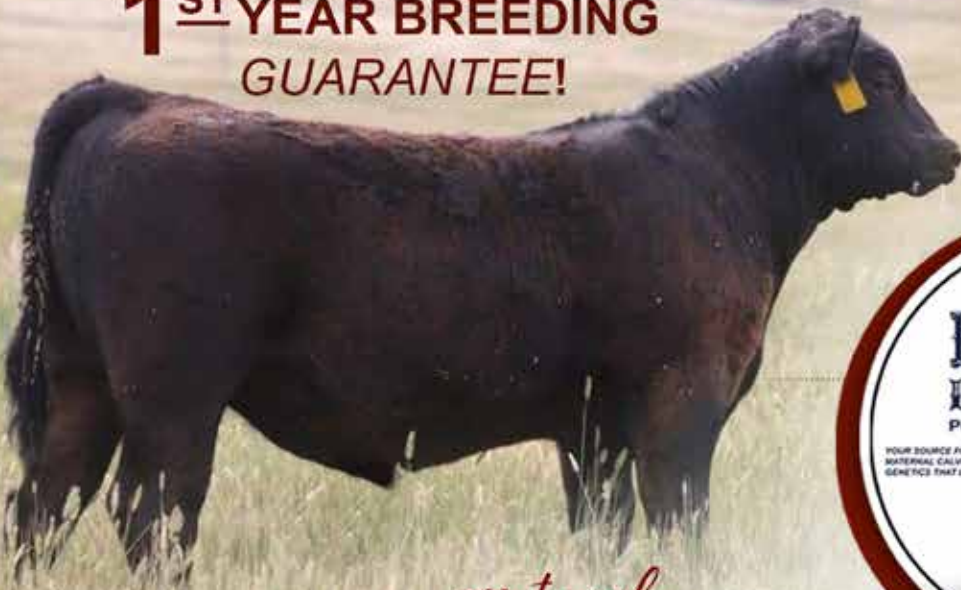


**1ST YEAR BREEDING
GUARANTEE!**

**COMPLIMENTARY
LUNCH
12 NOON**



Lot **24**

WHEN *Maternal Genetics* MATTER

Basin, Wy

9TH ANNUAL

ANGUS BULL SALE

1PM | SATURDAY | MAR 15 2025

BUFFALO LIVESTOCK MARKETING | BUFFALO, WY

50

Selling

**REGISTERED
YEARLING
ANGUS BULLS**

EVALUATED FOR

- PAP
- FERTILITY
- CARCASS
- PERFORMANCE



DVAuction

Broadcasting Real-Time Auctions

www.HANCOCKLIVESTOCK.com | 307-250-6900

Welcome CATTLEMEN & CATTLE WOMEN

Our purebred venture started with the goal to raise predictable, realistic, maternal genetics. To accomplish this, we wanted time tested proven genetics. We believe using proven maternal genetics is the key to a solid cow base. With strong maternal genetics, performance and carcass quality will fall into place. We focus on raising easy-fleshing moderate framed cattle with a calm disposition and calving ease. The ability to breed back on time is a must. They must be structurally sound with the ability to hang top-quality carcass values. Our genetics have done a remarkable job in the feedlot and on the rail with carcass data that makes us believe in our program.

We start calving the beginning of January using time-tested proven maternal AI sires. Our cows stay in close to the calving facilities and are artificial inseminated (AI) before going to pasture.

We wean all of our calves at the end of August each year and weaning weights and data is sent to the American Angus Association. Bulls are placed on a high roughage growth ration until our bull sale in March. During their 120-day gain test, they are weighed, PAP tested, ultra-sounded and fertility tested. Heifers are put on a roughage ration and at 120-days, yearling data is collected. They remain on the roughage ration until they are AI bred and sent to pasture with the mature cows in late May. When we began our program, the genetics of N-Bar EXT and Rito 707 were of high

interest to us. We felt they offered the best combination to achieve maternal quality, muscle, and longevity.

In the fall of 2009, we purchased a couple outstanding cows to add to our herd base. Sinclair Lady 7R30 853 is a daughter of Rito Revolve 0R5 and Majesty 853 of 5439 4465. We put this outstanding female in an embryo program raising elite daughters that have made a remarkable impact on our female base, along with selling five herd bulls to four different seedstock producers in Montana and Wyoming.

Sinclair BLKBIRD 8RL1 5XB10 is a daughter of Sinclair Rito Legacy and granddaughter of N Bar EXT. She has left us with superb daughters and granddaughters and has made a remarkable influence in our herd. She is the dam to HL Thunder Bolt, an outstanding son of Rito 7075.

Recently, we have added SAV Renown 3439, Ideal Encore of Ideal 9524 Lady and SAV Renovation 6822 to our AI program. These powerhouses will add some tremendous maternal bloodline to our herd that we can pass on to our customers.

We are always excited to talk about our program. If you want to visit our herd or just talk cattle give us a call. Thanks to all our customers & their support in the past.

- Charles

SALE INFORMATION

SALE DAY CONTACT:

Sale Barn.....**307-684-0789**
Charles Hancock.....**307-250-6900**
Leigh Vineyard.....**307-250-8881**

AUCTIONEER- Curt Westland**605-210-3329**

TRI-STATE REP Kade Kinghorn.....**307-620-0525**

CATTLE BUSINESS WEEKLY REP Ryan Casteel...**605-423-6000**

ONLINE BIDDING:

DVAuction, viewing and bidding available at www.DVAuction.com.

*Pre-registration required to bid.

HEARD HEALTH: (We offer a strict health program.)

ALL BULLS ARE:

- Tested negative for PI BVD
- Sold with health travel papers
- Calfhood vaccination- Vision 8 Somnus with SPUR, IBR, PI3, BRSV, BVD, Enforce 3. Same vaccinations at weaning and boosted at yearling. Ivermec Injectable Wormer. Bulls are on a mineral program from birth to sale time.
- Fertility tested- Dr. Allen Gotfredson, DVM
- Ultra Sounded - (Eric Geving)
- PAP Tested
- IVERMEC Injectable at weaning & first of the year
- Foot Rot weaning & boosted

PAP TESTED: ALL BULLS have been PAP Tested by Dr. Allen Gotfredson, DVM from Ten Sleep, WY. All bull calves were PAP tested at 4000 ft.

HANCOCK LIVESTOCK WINTERING OPTION: All bulls can be wintered until APRIL 25th. Delivery will take place between April 25 - May 1. Please make arrangements with Charles prior to the sale or directly after the sale.

***Anyone picking up their bulls sale day will receive \$100 back per bull.**

GUARANTEE:

All bulls selling for \$3,500 or more will be covered 50% by Hancock Livestock if they are injured during their first breeding season. Breeding season is defined as the 90-day period following the first turnout of the bulls.

50% of the value of the injured bull, minus one-half salvage value, will be given as a credit in a future sale or towards a replacement bull if one is available. Salvage value, if any, will be split equally between Hancock Livestock and the buyer. All injured bulls must be diagnosed by a veterinarian. Does not cover any loss from an act of nature. Please notify us as soon as possible should injury occur and prior to the injured bull being sold for salvage. All claims must be made by 9-30-25.

Example 1: A \$5,000 bull is injured and will not heal. A credit of \$2,500 minus one-half any salvage value will be given to the buyer.

Example 2: A \$3,500 bull is injured and will not heal. A credit of \$1,750 minus one-half any salvage value will be given to the buyer.

Example 3: A \$3,000 bull is injured and will not heal. Buyer retains all salvage value. No credit will be given.

* This is not a mortality policy.

DELIVERY: FREE delivery to central points within 500 miles, after 500 miles delivery at cost.

SIGHT UNSEEN GUARANTEE:

All sight unseen purchases will be satisfaction guarantee, if you have visited with Charles about the animal.

BULL VIEWING:

View the bulls as early as the afternoon of March 14th at Buffalo Livestock Marketing, or prior at the ranch in Basin WY.

DVAuction

Broadcasting Real-Time Auctions

Never Miss An Auction Again!
Watch & Bid online for FREE!

**Visit www.DVAuction.com
and Register Today!**

For General Questions Please Contact Our Office:
(402) 316-5460 or support@dvauction.com

FEED RATION

We have PAP tested for the past 12 years using the results as a tool to improve our cattle. We have had an improvement in scores each year. Along with the Angus Associations new PAP EPD we have had great success. This years average PAP score on our sale bulls is 37.4 with a high of 40. The use of low PAP sires has helped us to pass on low PAP genetics to our customers.

We worked with Hubbard feed to develop a feed ration to insure our bulls have sound feet and legs. Our ration consists of a high fiber protein pellet along with a complete mineral package, and long stem grass hay.



**WE PLACE
STRONG
EMPHASIS ON
FEET & UDDERS**

Reference Sires

SAV RENOWN 3439 3 SONS SELL



We brought SAV Renown into our program to use on our HL Ladies Man and HL Thunderbolt daughters to perk up our maternal blood. What a fantastic set of calves from this outstanding sire. We have females that are going to excel. His sons outstanding, thick, and extremely useful.

SAV RENOVATION 6822 8 SONS SELL



We are always in search of TOP NOTCH female making bulls with a powerful dam. SAV Renovation has really fit the bill for us. His daughters have excellent femininity, calm disposition, very promising future. His bull calves are extremely thick, square hiped, loaded with meat and muscle. We are pleased with his production.

RITO REVOLVE OR5 3 SONS SELL



FIRST-RATE female maker! Going back to the foundation here. We have reached back in the tank to bring our original Donor Dam, Sinclair Lady 7R30 853 sire back to the herd. OR5 compliments with excellent femininity, feet and structure. We are proud to have 3 offerings in this year's sale. Our excitement grows as we watch our replacement develop.

SINCLAIR EMULATE 7XT28 3 SONS SELL



Coming from a history of strong female influence, structural correctness, and solid feet in the herd, we have brought 7XT28 back for another round. His progeny are easy fleshing and fertile. Good cows that stay in the herd. This year we have 2 flush brothers that will definitely add the foundational spark to any herd.

We Strive
**TO BREED EASY FLESHING
MATERNAL GENETICS THAT**
Perform!

HL THUNDER BOLT 5R12 3 SONS SELL



Thunder Bolt has always sired exceptional bulls and females. His daughters never miss, nice udders, extremely fertile, always hold their conditioning in the weather extremes. Last years HIGH SELLING bull was a maternal brother.

IDEAL 1925 EMULOUS OF E1674 22 SONS SELL



A promising young herd sire we purchased from Jorgensen Land and Cattle. His sire was a real female maker. His sons in the sale show a lot of thickness and depth of body. Some nice daughters retained in our herd.

IDEAL ENCORE OF 9524 LADY 3 SONS SELL



Encore was brought into our herd to use on our first calf heifers. No assist on his calves, tremendous amount of bone on a calving ease bull. Great performance, excellent disposition. What an outstanding find and addition to our program.

Notes:



Here at Hancock Livestock We breed for easy fleshing genetics. These types of cattle stand out in drought years.

<< Photo: This bull was purchased a few sales ago. We love our customers to share there cattle pictures with us.

1 HANCOCK RENOVATION 4SN1



AAA 20952651 | DOB: 1/7/24

S A V Renown 3439 Rito 707 of Ideal 3407 7075
 S A V Blackcap May 4136
 S A V Renovation 6822 S A V 004 Density 4336
 S A V Madame Pride 0151 S A V Madame Pride 0075
 O C C Big Time 746Z Mc
 Mc Cumber 746Z Big Time 7146
 B Pride 172 of Mc Cumber
 Hancock Primrose 9MB4 4CI3 Connealy In Focus 4925
 H L Primrose 4CI3 2XF1
 H L Primrose 2XF1 659

CED	+6
BW EPD	+0.9
ACT BW	70
ADJ 205	783
WW EPD	+63
MILK	+23
ADJ 365	1117
YW EPD	+108
SC	41
PAP	37

CARCASS ULTRASOUND

RIB	IMF	REA
.48	4.12	13.3

Join US Sale Day
Complementary
LUNCH 11:30

A long bodied smooth sided bull from three generations of Pathfinder cows. Calving ease and performance, dam has a wean ratio of 108 on 4 calves with a 364 day calving interval.



2 HANCOCK RENOVATION 4SN3



AAA 20952495 | DOB: 1/9/24

S A V Renown 3439 Rito 707 of Ideal 3407 7075
 S A V Blackcap May 4136
 S A V Renovation 6822 S A V 004 Density 4336
 S A V Madame Pride 0151 S A V Madame Pride 0075
 Rito 707 of Ideal 3407 7075
 HL Ladies Man 5RI1 H L Blkbd 1FX3 8RL1
 Hancock Forever Lady OXR10 Coleman Knight 209
 Pine Coulee Forever Lady C44
 Pine Coulee Forever Lady A97

CED	+1
BW EPD	+3.3
ACT BW	81
ADJ 205	771
WW EPD	+65
MILK	+19
ADJ 365	1174
YW EPD	+121
SC	38.5
PAP	37

CARCASS ULTRASOUND

RIB	IMF	REA
.27	2.41	12.8

Average
PAP 37.4

Thick big boned bull, his dam comes from some great female makers. Dam is a second generation Pathfinder cow with a wean ration of 106 on 3 calves with a 366 day calving interval.

FREE DELIVERY!

to central points within 500 miles, after 500 miles delivery at cost.

**Anyone picking up their bulls sale day will receive \$100 back per bull.*

3 HANCOCK RENOVATION 4SN8



AAA 20952451 | DOB: 1/16/24

S A V Renown 3439 Rito 707 of Ideal 3407 7075
 S A V Blackcap May 4136
 S A V Renovation 6822 S A V 004 Density 4336
 S A V Madame Pride 0151 S A V Madame Pride 0075
 Rito 707 of Ideal 3407 7075
 HL Ladies Man 5RI1 H L Blkbd 1FX3 8RL1
 Hancock Dixie Erica 1XR9 7CG1 Pine Coulee Advance C364
 HL Blackfoot 7CR1 Pine Coulee Blackfoot C129

CED	+1
BW EPD	+3.3
ACT BW	80
ADJ 205	822
WW EPD	+71
MILK	+21
ADJ 365	1324
YW EPD	+128
SC	43
PAP	36

CARCASS ULTRASOUND

RIB	IMF	REA
.49	4.84	13.5

An impressive bull! This guy is loaded with performance, thickness, long bodied, on top of that a dam that is headed for greatness, beautiful female. His dam has a wean ratio of 110 on 2 calves with a calving interval of 346 days.



4

HANCOCK RENOWN 4SR3



AAA 20952479 | DOB: 1/10/24

R R Rito 707
 Rito 707 of Ideal 3407 7075
 Ideal 3407 of 1418 076

S A V Renown 3439
 S A V 8180 Traveler 004

S A V Blackcap May 4136
 S A V May 2397

HL Ladies Man 5RI1
 Rito 707 of Ideal 3407 7075

HL Majesty 7XR3 2PV5
 H L Blkbd 1FX3 8RL1

H L Lady 2PV5 7R30 853
 Sinclair Net Present Value
 Sinclair Lady 7R30 853

CED	+1
BW EPD	+2.4
ACT BW	81
ADJ 205	844
WW EPD	+72
MILK	+22
ADJ 365	1287
YW EPD	+130
SC	39.5
PAP	37

LOT 4 Dam
HL Majesty 7XR3 2PV5

Pathfinder cow sired by our home raised HL Ladies Man 5RI1

At 8 years old 7XR3 has weaned 6 calves with a 364 day calving interval. With an average wean ratio of 105.

Ladies Man daughters are the most fertile dams in our herd, easy fleshing, easy calving, exceptional feet & udders.

CARCASS ULTRASOUND

RIB	IMF	REA
.29	2.38	14.3

A performance machine! Extremely docile. This guy also comes with a great proven cow family. The third son of this cow, his last two maternal brothers both went to seedstock herds. His maternal grand dam has produced excellent daughters. Four generations of Pathfinder cows in his pedigree. His dam has six calves with a 105 wean ratio and 364 day calving interval. We are retaining 1/3 interest in this bull. Buyer gets full possession and salvage.



*Pathfinder
Dam 7XR3*

5

HANCOCK HANK 4T8



AAA 20952483 | DOB: 1/31/24

Tail N Emulous 848
 Tail N Emulous 1674
 68 Emulous 154

Ideal 1925 Emulous of E1674
 S A V Resource 1441

Ideal 5143 of RES Marjorie
 Ideal 9147 of 4355 236
 Rito 707 of Ideal 3407 7075

HL Ladies Man 5RI1
 H L Blkbd 1FX3 8RL1

HL Miss Emulous 8XR5 5BR2
 S A V Brilliance 8077

HL Miss Emulous 5BR2
 H L Miss Emulous 3FX1

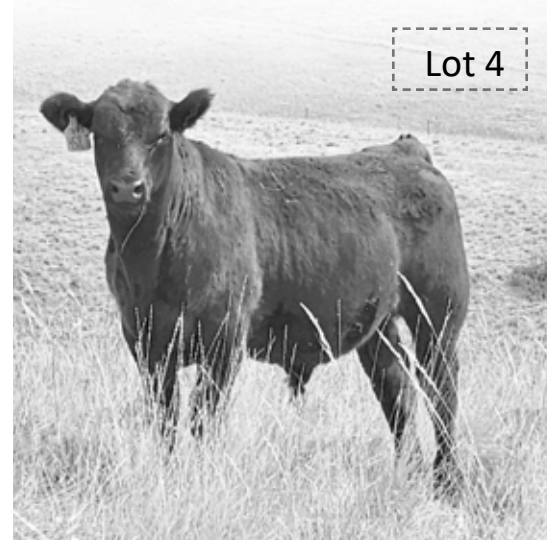
CED	-1
BW EPD	+2.4
ACT BW	80
ADJ 205	726
WW EPD	+49
MILK	+25
ADJ 365	1144
YW EPD	+87
SC	38
PAP	39

Lot 4

A thick, big boned, bold muscled bull. A nice bull full of generations of great cows. His dam has weaned 5 calves with a wean ratio of 100 and 368 day calving interval.

CARCASS ULTRASOUND

RIB	IMF	REA
.28	2.92	12.1



6

HANCOCK RENOVATION 4SN4

AAA 20952476 | DOB: 1/9/24

S A V Renown 3439 Rito 707 of Ideal 3407 7075
 S A V Blackcap May 4136
 S A V Renovation 6822 S A V 004 Density 4336
 S A V Madame Pride 0151 S A V Madame Pride 0075
 Sinclair Fortunate Son
 Mc Cumber Fortunate 213 Miss Wix 5139 of Mc Cumber
 HL Lady 7MF9 5XL8 Sinclair Emulation XXP
 HL Lady 5XL8 H L Lady 2RI2 6V7 3407

CED	+1
BW EPD	+3.1
ACT BW	82
ADJ 205	812
VW EPD	+67
MILK	+18
ADJ 365	1279
YW EPD	+129
SC	43
PAP	37

CARCASS ULTRASOUND

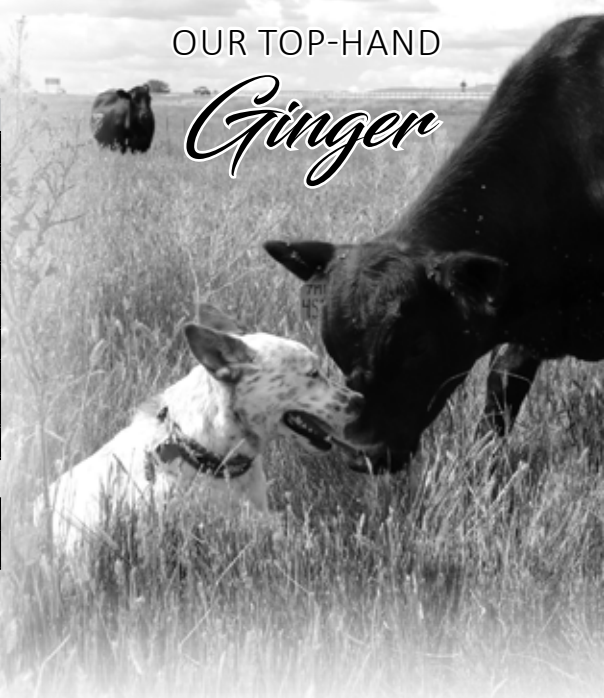
RIB	IMF	REA
.44	2.85	14.5

A long bodied, big boned, thick made bull. Lots of performance and some great females in his pedigree. Dam has weaned six calves with a wean ratio of 100 and a 368 day calving interval.



OUR TOP-HAND

Ginger



7

HANCOCK RENOWN 4SR5

AAA 20952467 | DOB: 1/17/24

S A V Renown 3439 R R Rito 707
 Rito 707 of Ideal 3407 7075
 Ideal 3407 of 1418 076
 S A V Blackcap May 4136 S A V 8180 Traveler 004
 S A V May 2397
 Sinclair Emulation 5522 XP Emulation N Bar 5522 Mc
 N Bar Primrose Y3051
 H L Blkbd 4FX5 2E1 Sinclair Emulate 7XT28
 H L Blackbird 2E1 8RL1 Sinclair Blkbd 8RL1 5XB10

CED	-1
BW EPD	+2.9
ACT BW	78
ADJ 205	873
VW EPD	+66
MILK	+24
ADJ 365	1299
YW EPD	+120
SC	40.5
PAP	38

CARCASS ULTRASOUND

RIB	IMF	REA
.36	2.20	15.5

A bull that really puts it together. Thick, bold muscled, performance. His dam is one of our top cows. Three generations of Pathfinder cows. His dam does an incredible job. Beautiful cow! Dam has weaned nine calves with an average wean ratio of 109 and 366 day calving interval. We are retaining 1/3 interest in this bull. Buyer gets full possession and salvage.



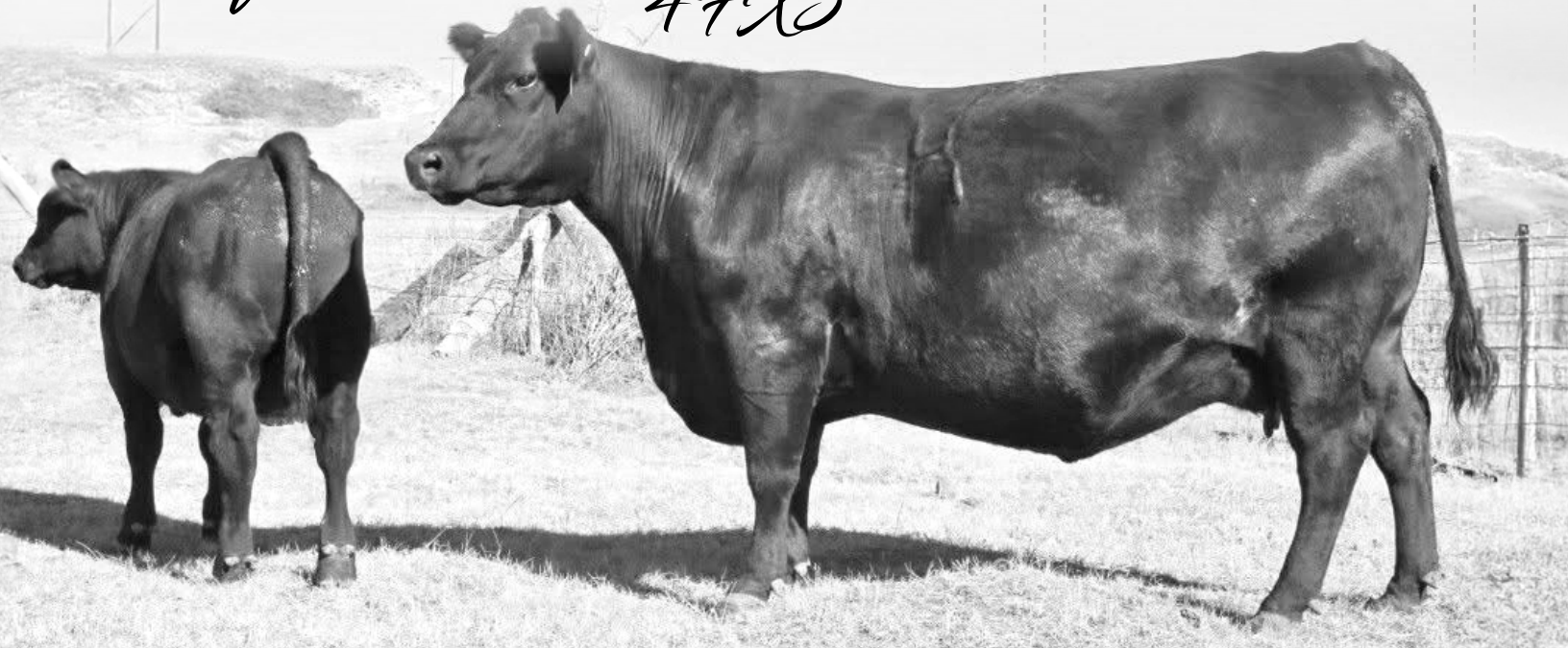
LOT 7 Dam
H L Blkbd 4FX5 2E1

Exceptional Pathfinder cow sired by Sinclair Emulation 5522 XP.

At 11 years old 4FX5 still takes her assignment serious! Producing 9 calves on an average 366 day calving interval. With a wean ratio of 109.

To say the least she has done the above and beyond for our program!

Pathfinder Dam 4FX5



8

HANCOCK RENOVATION 4SN6

AAA 20952438 | DOB: 1/12/24



S A V Renown 3439 Rito 707 of Ideal 3407 7075
 S A V Renovation 6822 S A V Blackcap May 4136
 S A V Madame Pride 0151 S A V 004 Density 4336
 Sinclair Executive 9XV2 S A V Madame Pride 0075
 N Bar Emulation Ext V722
 N Bar Primrose Y3051
 Hancock K Beauty 0U14 8RL2 Sinclair Rito Legacy 3R9
 HL K Bty 8RL2 5XL9 HL K Bty 5XL9

CED	+2
BW EPD	+2.3
ACT BW	80
ADJ 205	766
VW EPD	+58
MILK	+20
ADJ 365	1177
YW EPD	+110
SC	39
PAP	38

CARCASS ULTRASOUND

RIB	IMF	REA
.44	2.52	13.4

Big ribbed thick bull. Extremely correct made. This bulls dam has an incredible pedigree, stacked with great maternal sires. Her bull last year went to a seedstock producer. Dams average wean ratio 109 on three calves with a 366 day calving interval. Pathfinder cow!



9

HANCOCK RENOVATION 4SN10

AAA 20952474 | DOB: 1/18/24



S A V Renown 3439 Rito 707 of Ideal 3407 7075
 S A V Renovation 6822 S A V Blackcap May 4136
 S A V Madame Pride 0151 S A V 004 Density 4336
 S A V Madame Pride 0075
 Koupal Advance 28 Mc
 Pine Coulee Advance C364 Pine Coulee Erica A80
 HL Blackfoot 7CR1 Coleman Knight 209
 Pine Coulee Blackfoot C129
 Pine Coulee Blackfoot A185

CED	+5
BW EPD	+2.1
ACT BW	76
ADJ 205	803
VW EPD	+64
MILK	+23
ADJ 365	1169
YW EPD	+113
SC	41.5
PAP	39

CARCASS ULTRASOUND

RIB	IMF	REA
.36	3.50	14.2

These Renovation sons, eight of them, are all outstanding. This guy is thick, long, big boned and full of performance. His dam is an excellent cow, picture perfect. Pathfinder cow with 6 calves weaning with an average wean ratio of 108 and calving interval of 368 days.



LOT 9 Dam
HL Blackfoot 7CR1

10

HANCOCK RENOVATION 4SN9

AAA 20952464 | DOB: 1/18/24



S A V Renown 3439 Rito 707 of Ideal 3407 7075
 S A V Renovation 6822 S A V Blackcap May 4136
 S A V Madame Pride 0151 S A V 004 Density 4336
 S A V Madame Pride 0075
 Mytty In Focus
 Connealy In Focus 4925 Black Cana of Conanga 206
 H L Primrose 4CI3 2XF1 Sinclair Emulation Line X
 H L Primrose 2XF1 659 Sinclair Primrose 9P55 659

CED	-3
BW EPD	+4.4
ACT BW	90
ADJ 205	859
VW EPD	+70
MILK	+24
ADJ 365	1289
YW EPD	+121
SC	42
PAP	39

CARCASS ULTRASOUND

RIB	IMF	REA
.35	3.64	14.0

This bull is incredibly thick, packed with performance. His dam a maternal great! We have daughters from her that are all Pathfinder cows. Dam of Lot #10 Pathfinder cow with 9 calves with an average wean ratio of 108 and a calving interval of 364 days.



LOT 10 Dam
H L Primrose 4CI3 2XF1

11

HANCOCK HANK 4T2

AAA 20952450 | DOB: 1/10/24



Tail N Emulous 1674	Tail N Emulous 848
Ideal 1925 Emulous of E1674	68 Emulous 154
Ideal 5143 of RES Marjorie	S A V Resource 1441
HL Ladies Man 5R11	Ideal 9147 of 4355 236
Hancock Mabel 1XR8 6V2	Rito 707 of Ideal 3407 7075
HL Mabel 6V2 602	H L Blkbd 1FX3 8RL1
	N Bar Emulation Ext A1747
	DR Mabel 602

CED	+1
BW EPD	+1.7
ACT BW	76
ADJ 205	774
WW EPD	+51
MILK	+27
ADJ 365	1241
YW EPD	+94
SC	39.5
PAP	38

CARCASS ULTRASOUND

RIB	IMF	REA
.35	3.59	11.9



LOT 11 Dam
Hancock Mabel 1XR8 6V2

A smooth sided balanced son of 1925, coming from an outstanding maternal cow family that always produces top progeny. This bulls dam has produced two calves with an average wean ratio of 105 and a calving interval of 368 days.



12

HANCOCK ENCORE 4J10

AAA 20952463 | DOB: 1/30/24



Ideal 9524 of 5570 6809	Ideal 5570 of 0452 0534
Ideal Encore of 9524 Lady	Ideal 6809 of 2P88 0459
Ideal 3020 of SE 6X7 Lady	Sinclair Extravagant 6X7
S A V Bruiser 9164	Ideal 4428 of 6442 4465
H L Blackcap 3BZ3 8XE36	S A V Bismarck 5682
Sinclair Blkcap 8XE36 2Z14	S A V Miss Bobbie 7463
Sinclair Blackcap 2Z14 0953	Sinclair Excellency 5X25

CED	+8
BW EPD	+0.5
ACT BW	78
ADJ 205	711
WW EPD	+58
MILK	+26
ADJ 365	1103
YW EPD	+113
SC	39
PAP	39

CARCASS ULTRASOUND

RIB	IMF	REA
.36	3.89	10.9

An outstanding Encore son that should make a great calving ease bull. This bull comes from a great old cow that has always produced top notch calves. The dam has weaned 10 calves with an average wean ratio of 102 and 367 day calving interval.



13

HANCOCK HANK 4T11

AAA 20952508 | DOB: 2/4/24



Tail N Emulous 1674
Ideal 1925 Emulous of E1674

Tail N Emulous 848
68 Emulous 154
S A V Resource 1441
Ideal 9147 of 4355 236
Emulation N Bar 5522 Mc
Sinclair Emulation 5522 XP
N Bar Primrose Y3051

HL Lady 6FX11 4PV1
H L Lady 4PV1 7R30

Sinclair Net Present Value
Sinclair Lady 7R30 853

CED	+6
BW EPD	-0.8
ACT BW	69
ADJ 205	677
VW EPD	+39
MILK	+23
ADJ 365	1045
YW EPD	+67
SC	36.5
PAP	37

BREEDING CATTLE
IN MODERATION
No Extremes
WILL RESULT IN
FUNCTIONAL CATTLE.

A smooth shouldered, nice structured calving ease bull. This bull comes from one of our top donor families. Dam has produced seven calves with an average wean ratio of 97 and a calving interval of 367 days.

CARCASS ULTRASOUND

RIB	IMF	REA
.22	2.85	11.7

14

HANCOCK ENCORE 4J7

AAA 20952496 | DOB: 1/23/24



Ideal 9524 of 5570 6809
Ideal Encore of 9524 Lady

Ideal 5570 of 0452 0534
Ideal 6809 of 2P88 0459
Sinclair Extravagant 6X7
Ideal 3020 of SE 6X7 Lady
Ideal 4428 of 6442 4465
Rito 707 of Ideal 3407 7075

S A V Renown 3439
Hancock Blkbrd 1SR11 4FX5
H L Blkbrd 4FX5 2E1

S A V Blackcap May 4136
Sinclair Emulation 5522 XP
H L Blackbird 2E1 8RL1

CED	+5
BW EPD	+0.6
ACT BW	71
ADJ 205	785
VW EPD	65
MILK	+26
ADJ 365	1313
YW EPD	+130
SC	40.5
PAP	37

An outstanding thick long bodied Encore son. A calving ease bull with performance, an outstanding maternal cow family. The outstanding dam of this bull has weaned two calves with an average wean ratio of 101 and calving interval of 341 days.

CARCASS ULTRASOUND

RIB	IMF	REA
.34	2.42	13.9



LOT 14 Dam
Hancock Blkbrd 1SR11 4FX5

15

HANCOCK HANK 4T29

AAA 20952432 | DOB: 2/17/24



Tail N Emulous 1674
Ideal 1925 Emulous of E1674

Tail N Emulous 848
68 Emulous 154
S A V Resource 1441
Ideal 9147 of 4355 236
N Bar Emulation EXT
N Bar Emulation Ext A1747
N Bar Clova Pride U3031

Hancock Clova Pride 9V3 ORL1
H L Eila ORL1 U125

Sinclair Rito Legacy 3R9
Double W Miss Freedom U125

CED	+2
BW EPD	+1.1
ACT BW	74
ADJ 205	782
VW EPD	+50
MILK	+27
ADJ 365	1112
YW EPD	+84
SC	39.5
PAP	39

A calving ease bull with great performance, thickness and backed up by a great cow family. His dam has weaned four calves with an average wean ratio of 102 with a 379 day calving interval.

CARCASS ULTRASOUND

RIB	IMF	REA
.26	2.22	13.4



16

HANCOCK HANK 4T42

AAA 20952473 | DOB: 3/2/24



Tail N Emulous 1674
Ideal 1925 Emulous of E1674
Ideal 5143 of RES Marjorie
Ideal Encore of 9524 Lady
Ideal 7704 of Encore Blkbrd
Ideal 5423 of 3365 Blkbrd

Tail N Emulous 848
68 Emulous 154
S A V Resource 1441
Ideal 9147 of 4355 236
Ideal 9524 of 5570 6809
Ideal 3020 of SE 6X7 Lady
Ideal 3365 of 1740 Belle
Ideal 3569 of 9524 Blkbrd

CED	+4
BW EPD	+0.4
ACT BW	78
ADJ 205	796
WW EPD	+51
MILK	+31
ADJ 365	1239
YW EPD	+105
SC	42
PAP	38

CARCASS ULTRASOUND

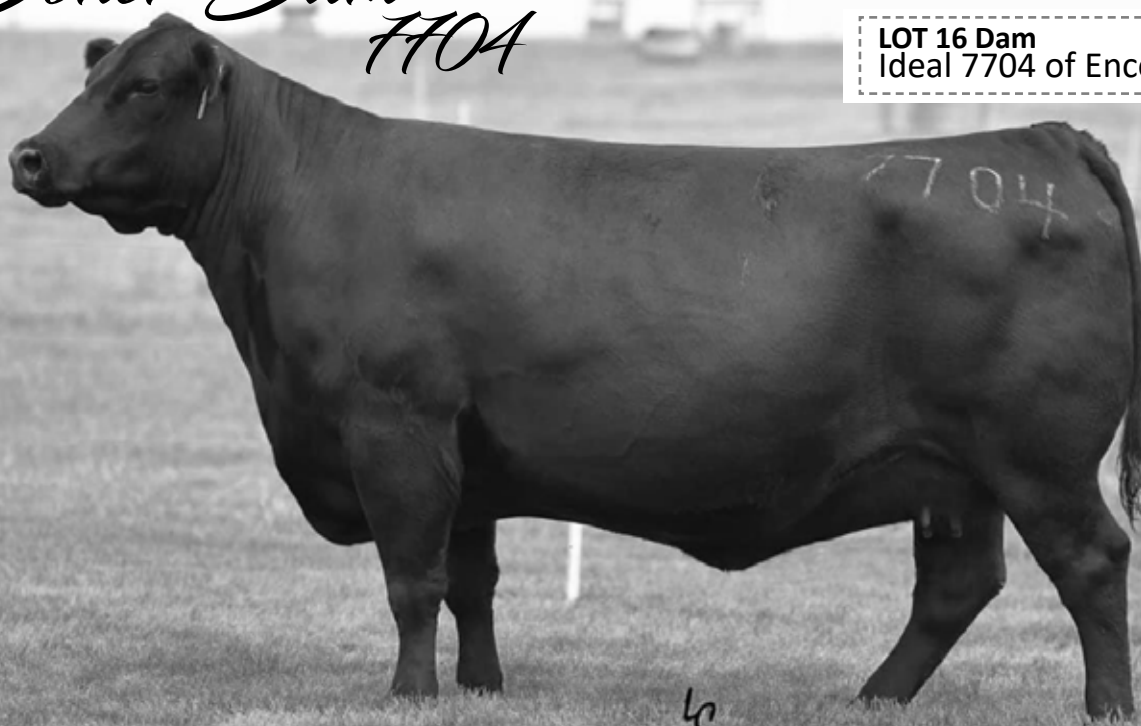
RIB	IMF	REA
.39	2.93	13.3



A long bodied, thick, smooth sided calving ease bull. His dam a donor cow, what an outstanding individual. This cow has 71 progeny on the ground. She has produced 3 natural calves with a wean ratio of 101.

*Doner Dam
7704*

LOT 16 Dam
Ideal 7704 of Encore Blkbrd



17

HANCOCK HANK 4T22

AAA 20952443 | DOB: 2/15/24



Tail N Emulous 1674
Ideal 1925 Emulous of E1674
Ideal 5143 of RES Marjorie
Ideal Encore of 9524 Lady
Hancock Blk Annie 1J10 9FX1
Hancock Black Annie 9FX1

Tail N Emulous 848
68 Emulous 154
S A V Resource 1441
Ideal 9147 of 4355 236
Ideal 9524 of 5570 6809
Ideal 3020 of SE 6X7 Lady
Sinclair Emulation 5522 XP
HL Black Annie 7WT4

CED	+9
BW EPD	-1.6
ACT BW	62
ADJ 205	709
WW EPD	+43
MILK	+29
ADJ 365	1037
YW EPD	+80
SC	36
PAP	35

CARCASS ULTRASOUND

RIB	IMF	REA
.25	2.50	11.8

An outstanding calving ease bull. Smooth shoulders, long front, long sided. His dam has weaned 2 calves with an average wean ratio of 98 and a calving interval of 370 days

Average
PAP 37.4

18

HANCOCK HANK 4T24

AAA 20952484 | DOB: 2/16/24



Tail N Emulous 1674 Tail N Emulous 848
 Ideal 1925 Emulous of E1674 68 Emulous 154
 Ideal 5143 of RES Marjorie S A V Resource 1441
 Sinclair Emulation 5522 XP Ideal 9147 of 4355 236
 Hancock Primrose 9FX4 7MC8 Emulation N Bar 5522 Mc
 N Bar Primrose Y3051
 HL Primrose 7MC8 4RI4 Mc Cumber 2008 Trmndous 543
 H L Primrose 4RI4 9P50

CED	+1
BW EPD	+1.4
ACT BW	79
ADJ 205	727
WW EPD	+44
MILK	+25
ADJ 365	1117
YW EPD	+78
SC	39
PAP	36

INDIVIDUAL BULL VIDEOS

AVAILABLE ON

DVAuction

www.dvauction.com

▶ *A bull that will produce some nice females. His dam is a nice maternal cow who has produced 4 calves with an average wean ratio of 100 and a calving interval of 375 days.*

CARCASS ULTRASOUND

RIB	IMF	REA
.36	2.96	12

Doner Dam Y5



LOT 19 Dam
Pine Coulee Lucy Y5

19

HANCOCK JESSEE JAMES 4JJ1

AAA 20952673 | DOB: 1/18/24



S A V Renown 3439
 S A V Renovation 6822 S A V Madame Pride 0151
 S A V Jesse James 0968 S A V 8180 Traveler 004
 S A V Blackcap May 8961 S A V May 2397
 Q A S Traveler 23-4
 D H D Traveler 6807 Bemindful Maid D H D 0807
 Pine Coulee Lucy Y5 N Bar Emulation EXT
 Pine Coulee Lucy P7 Pine Coulee Lucy 0P11

CED	+4
BW EPD	+4.8
ACT BW	90
ADJ 205	664
WW EPD	+45
MILK	+26
ADJ 365	1064
YW EPD	+81
SC	36.5
PAP	37

Sire
SAV Jesse James 0968



▶ *A nice thick long bodied bull with some bone and depth of body. His dam, a donor cow with a lot of maternal value. This bull should fit in a lot of good programs.*

CARCASS ULTRASOUND

RIB	IMF	REA
.26	3.37	11.3

20

HANCOCK HANK 4T39

AAA 20952427 | DOB: 2/25/24



Tail N Emulous 1674
Ideal 1925 Emulous of E1674
Hancock Majesty 0U9 8RR5

Tail N Emulous 848
68 Emulous 154
S A V Resource 1441
Ideal 9147 of 4355 236
N Bar Emulation Ext V722
N Bar Primrose Y3051
HL Thunder Bolt 5RI2
H L Lady 4FX2 2PV2

CED	+0
BW EPD	+1.5
ACT BW	80
ADJ 205	748
WW EPD	+46
MILK	+23
ADJ 365	1129
YW EPD	+84
SC	36
PAP	38

CARCASS ULTRASOUND

RIB	IMF	REA
.18	3.10	11.9

A long bodied thick bull with some bone and growth. His dam is an outstanding cow weaning 3 calves with an average wean ratio of 96, calving interval of 377 days.



PAP TESTING
Allen Gotfredson DVM

21

HANCOCK HANK 4T26

AAA 20952519 | DOB: 2/17/24



Tail N Emulous 1674
Ideal 1925 Emulous of E1674
Hancock Miss Emulous 9RR10

Tail N Emulous 848
68 Emulous 154
S A V Resource 1441
Ideal 9147 of 4355 236
Rito 707 of Ideal 3407 7075
Sinclair Blkbird 8RL1 5XB10
Mc Cumber Fortunate 213
HL Miss Emulous 5V5

CED	+0
BW EPD	+0.8
ACT BW	78
ADJ 205	726
WW EPD	+46
MILK	+27
ADJ 365	1156
YW EPD	+87
SC	36
PAP	39

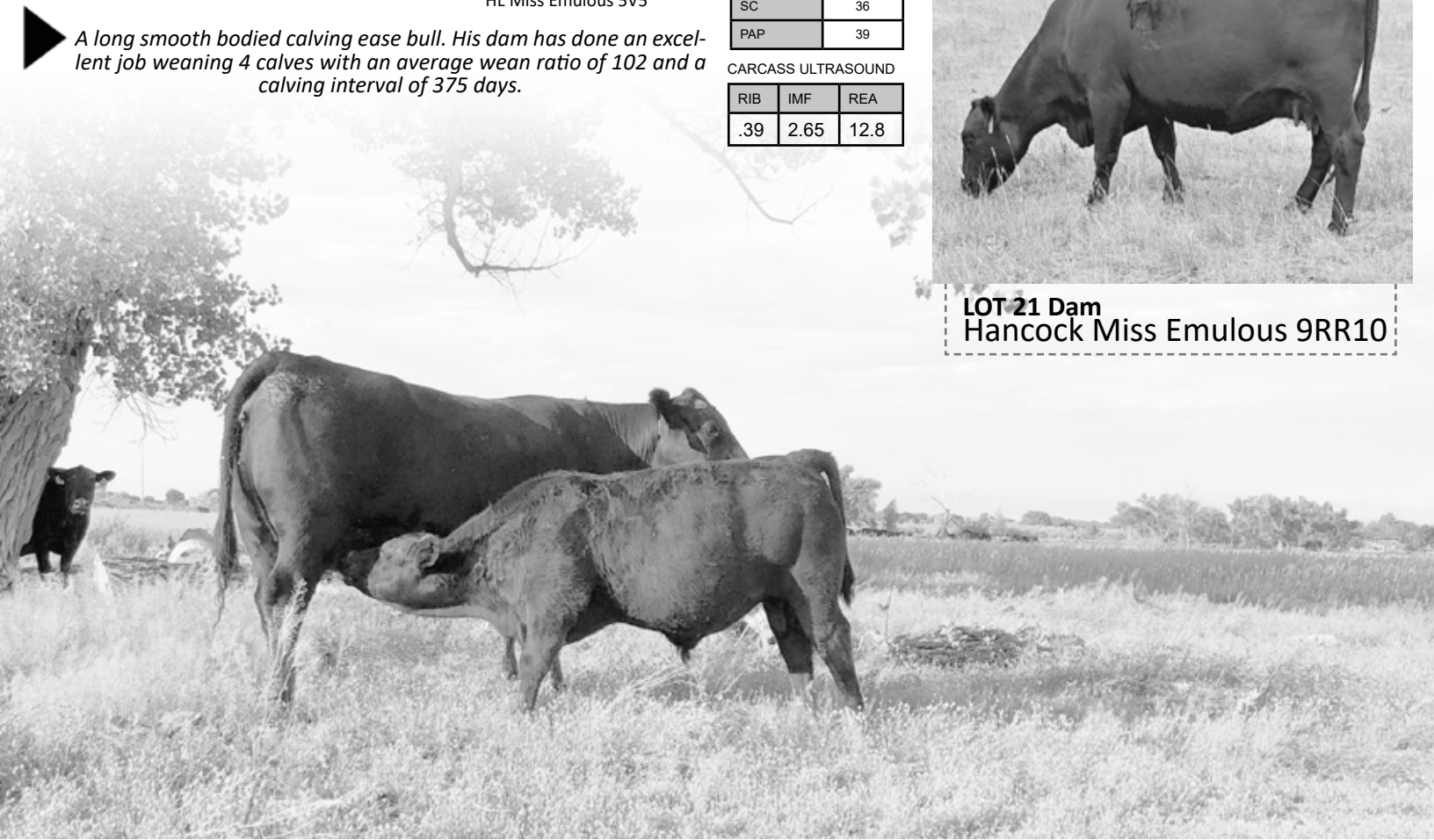
CARCASS ULTRASOUND

RIB	IMF	REA
.39	2.65	12.8

A long smooth bodied calving ease bull. His dam has done an excellent job weaning 4 calves with an average wean ratio of 102 and a calving interval of 375 days.



LOT 21 Dam
Hancock Miss Emulous 9RR10



22 HANCOCK THUNDERSTRUCK 4RR5



AAA 20952435 | DOB: 1/17/24

R R Rito 707
 Rito 707 of Ideal 3407 7075
 Ideal 3407 of 1418 076
 HL Thunder Bolt 5R12
 Sinclair Blkbird 8RL1 5XB10
 Sinclair Rito Legacy 3R9
 Sinclair Blkdb 5XB10 2P15
 Sinclair Extra 4X13
 HL High Plains Drifter 7XT1
 Sinclair Lady 3R1 4465
 Hancock Blackbird ORP1 7XR7
 HL Ladies Man 5R11
 HL Blackbird 7XR7 8RL1
 Sinclair Blkbird 8RL1 5XB10

CED	+5
BW EPD	+0.1
ACT BW	69
ADJ 205	679
VW EPD	+45
MILK	+21
ADJ 365	1042
YW EPD	+79
SC	37
PAP	38

CARCASS ULTRASOUND

RIB	IMF	REA
.25	2.32	12.4

A calving ease bull with an outstanding maternal pedigree, his dam is bred to make females. She has weaned 3 calves with an average wean ratio of 98 and a calving interval of 347 days.



23 HANCOCK THUNDERSTRUCK 4RR6



AAA 20952453 | DOB: 1/20/24

R R Rito 707
 Rito 707 of Ideal 3407 7075
 Ideal 3407 of 1418 076
 HL Thunder Bolt 5R12
 Sinclair Blkbird 8RL1 5XB10
 Sinclair Rito Legacy 3R9
 Sinclair Blkdb 5XB10 2P15
 Ideal 9524 of 5570 6809
 Ideal Encore of 9524 Lady
 Ideal 3020 of SE 6X7 Lady
 Hancock Blackbird 2J20 0U11
 Sinclair Executive 9XV2
 Hancock Blackbird 0U11 8MS4
 HL Blackbird 8MS4 2RU5

CED	+3
BW EPD	+1.1
ACT BW	69
ADJ 205	712
VW EPD	+53
MILK	+23
ADJ 365	1104
YW EPD	+104
SC	38
PAP	37

CARCASS ULTRASOUND

RIB	IMF	REA
.29	2.81	12.6

A deep bodied smooth shouldered bull that has an excellent maternal pedigree. This bull should make some excellent females and put performance in his calves. His dam a first calf heifer having 1 calf with a wean ratio of 100.

MARCH 15TH
 SALE TIME 1PM

VIEW THE BULLS AS EARLY AS THE
 AFTERNOON OF MARCH 14TH AT BUFFALO
 LIVESTOCK Marketing

Buffalo, Wyoming



24

HANCOCK EMULATION RITO 4E3

AAA 20952525 | DOB: 1/22/24



Sinclair Extra 4X13 N Bar Emulation EXT
 Sinclair Emulate 7XT28 N Bar Lady Ida S C C 2P37
 Sinclair Blackbird 20F3 6417 Emulation N Bar 5522
 Sinclair Rito Legacy 3R9 Ideal 6417 of 1418 2459
 Sinclair Blkbird 8RL1 5XB10 R R Rito 707
 Sinclair Blkbd 5XB10 2P15 Ideal 4465 of 6807 4286
 Sinclair Double X
 Sinclair Blackbird 2P15 3407

CED	+3
BW EPD	+1.2
ACT BW	74
ADJ 205	829
WW EPD	+57
MILK	+24
ADJ 365	1279
YW EPD	+100
SC	39.5
PAP	38

CARCASS ULTRASOUND

RIB	IMF	REA
.44	2.49	15.4

4E3 is an embryo calf out of Blackbird 8RL1. This thick made big topped long bodied bull is a bull with a great future. He sports a 15.5 ribeye. I can't say enough about his dam, she has made a remarkable stamp in our herd. 8RL1 has produced 15 natural calves with an average wean ratio of 107 and a calving interval of 359 days. Her pedigree is in 72% of our herd. That is an influence! We are retaining half interest in this bull. Selling half interest and full



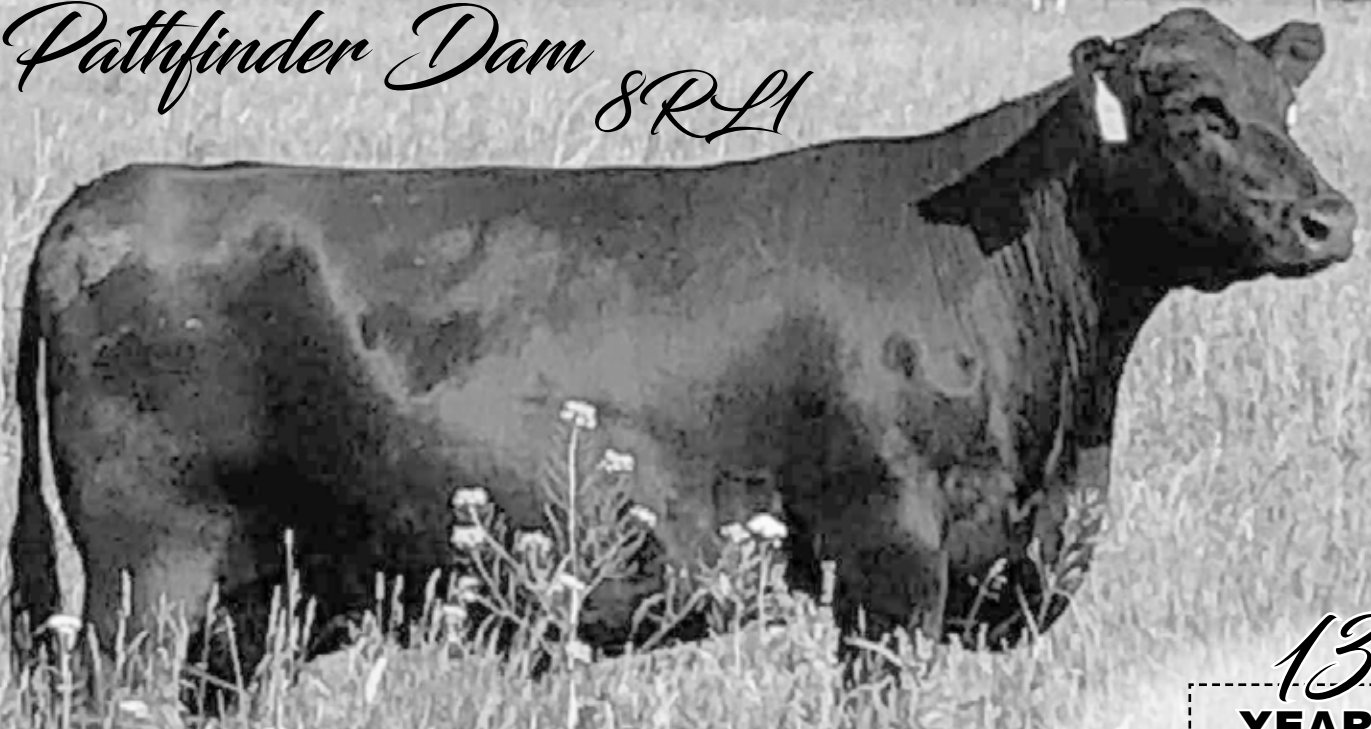
8RL1 Facts

15 Natural Calves

Wean Ratio of 107

359 day calving Interval

Doner & Pathfinder Dam 8RL1



13 YEARS OF AGE

25

HANCOCK EMULATION RITO 4E4



AAA 20966616 | DOB: 1/24/24

Sinclair Extra 4X13 N Bar Emulation EXT
 Sinclair Emulate 7XT28 N Bar Lady Ida S C C 2P37
 Sinclair Blackbird 20F3 6417 Emulation N Bar 5522
 Sinclair Rito Legacy 3R9 Ideal 6417 of 1418 2459
 Sinclair Blkbird 8RL1 5XB10 R R Rito 707
 Sinclair Blkbd 5XB10 2P15 Ideal 4465 of 6807 4286
 Sinclair Double X
 Sinclair Blackbird 2P15 3407

CED	+3
BW EPD	+1.6
ACT BW	72
ADJ 205	742
WW EPD	+48
MILK	+24
ADJ 365	1244
YW EPD	+86
SC	38
PAP	37



4E4 an embryo calf and flush mate to 4E3. A long bodied smooth made bull that should be a calving ease prospect. His dam Blackbird 8RL1 is remarkable. 4E4 and 4E3 are both going to fit into a lot of seed stock herds. They are the real deal. We are retaining half interest in 4E4. Selling half interest and full possession and full salvage value.

CARCASS ULTRASOUND

RIB	IMF	REA
.47	3.43	12.7

Progeny-

HL THUNDER BOLT 5R12



Thunder Bolt has always sired exceptional bulls and females. He has 3 sons in this sale. Thunder Bolt has worked wonders on our heifers over the past years.

HL BLKBIRD 6XL7 8RL1 with bull calf at side



One of 8RL1's daughters. She was purchased by Epling Farms, and is still in production.

H L BLACKBIRD 2E1 8RL1 full sister to Lots 24 & 25



2E1- She was one of our top producing daughters of 8RL1. Sinclair Emulate 7XT28 nicked well 8RL1, we were hoping to duplicate 2E1 in this flush. We are sure these two flush mates will compliment any herd.



16
YEARS
OF AGE

26

HANCOCK ENCORE 4J5

AAA 20952499 | DOB: 1/18/24



Ideal 9524 of 5570 6809
 Ideal Encore of 9524 Lady
 Ideal 3020 of SE 6X7 Lady
 S A V Renown 3439
 Hancock Blkcap 1SR18 8RR10
 HL Blkcap 8RR10 6XL4

Ideal 5570 of 0452 0534
 Ideal 6809 of 2P88 0459
 Sinclair Extravagant 6X7
 Ideal 4428 of 6442 4465
 Rito 707 of Ideal 3407 7075
 S A V Blackcap May 4136
 HL Thunder Bolt 5R12
 HL Blkcap 6XL4 8XE36

CED	+5
BW EPD	+0.5
ACT BW	72
ADJ 205	685
WW EPD	+55
MILK	+25
ADJ 365	1143
YW EPD	+114
SC	37
PAP	37

CARCASS ULTRASOUND

RIB	IMF	REA
.33	3.40	12.2

A nice smooth shouldered calving ease bull. His dam comes from a nice maternal cow family. She has weaned 2 calves with an average wean ratio of 101 and 375 day calving interval.



27

HANCOCK THUNDERSTRUCK 4RR4

AAA 20952466 | DOB: 1/15/24



HL Thunder Bolt 5R12
 Sinclair Blkbird 8RL1 5XB10
 Sinclair Emulation 5522 XP
 H L Lady 4FX3 2R12
 H L Lady 2R12 6V7 3407

R R Rito 707
 Rito 707 of Ideal 3407 7075
 Ideal 3407 of 1418 076
 Sinclair Rito Legacy 3R9
 Sinclair Blkbd 5XB10 2P15
 Emulation N Bar 5522
 N Bar Primrose Y3051
 Rito 707 of Ideal 3407 7075
 Sinclair Lady 6V7 2X57

CED	-2
BW EPD	+2.6
ACT BW	84
ADJ 205	725
WW EPD	+49
MILK	+19
ADJ 365	1128
YW EPD	+86
SC	38
PAP	38

CARCASS ULTRASOUND

RIB	IMF	REA
.24	2.02	12.9

A thick big boned bull that comes from a very productive cow. His dam has weaned nine calves with a wean ratio of 100 and a calving interval of 365 days.

“We have used Hancock bulls for the past five years and have had great results. We couldn’t ask for better genetics and dispositions of the bulls that we have purchased. The calving ease and weaning weights have made the family ranch operation profitable. The replacement heifers that we have kept have great maternal qualities that we strive for in our commercial operation.”

**Greg and Nocona Cantlin
 Cantlin Double Horseshoe Ranch,
 LLC.**



28

HANCOCK RITO REVOLVE 4R4



AAA 20952485 | DOB: 1/15/24

R R Rito 707 Rito N Bar
 Rito Revolve OR5 Eriskay of Rollin Rock 3
 Ideal 1456 of 8103 8114 Ideal 8103 of Eldo 5110 5213
 Sinclair Emulation 5522 XP Ideal 8114 of Eldo 5110 3127
 Emulation N Bar 5522
 Hancock Miss Rito 9FX8 4RI3 N Bar Primrose Y3051
 H L Miss Rito 707 4RI3 Rito 707 of Ideal 3407 7075
 Double W Miss Ext U003

CED	+1
BW EPD	+1.9
ACT BW	74
ADJ 205	733
VW EPD	+46
MILK	+14
ADJ 365	1074
YW EPD	+79
SC	39
PAP	38

CARCASS ULTRASOUND

RIB	IMF	REA
.26	2.85	11.4

An outstanding son of Rito Revolve OR5. This thick, long bodied, big boned bull will be a real female maker. His sire and dam are both great female makers along with great phenotype. An exciting young bull. His dam has weaned 4 calves with an average wean ratio of 101 and calving interval of 368 days. We will be retaining half interest on this bull. Selling half interest, full possession and full salvage.



29

HANCOCK HANK 4T14



AAA 20952487 | DOB: 2/9/24

Tail N Emulous 1674 Tail N Emulous 848
 Ideal 1925 Emulous of E1674 68 Emulous 154
 Ideal 5143 of RES Marjorie S A V Resource 1441
 Ideal 9147 of 4355 236
 Sinclair Fortunate Son
 Hancock Majesty 9MT2 6FX11 Mc Cumber Titanium 3127
 Miss Wix 926 OF Mc Cumber
 HL Lady 6FX11 4PV1 Sinclair Emulation 5522 XP
 H L Lady 4PV1 7R30

CED	+1
BW EPD	+1.4
ACT BW	78
ADJ 205	711
VW EPD	+48
MILK	+21
ADJ 365	1117
YW EPD	+83
SC	36.5
PAP	35

CARCASS ULTRASOUND

RIB	IMF	REA
.18	1.83	12.8

A thick stout bull out of our 1925 bull. His dam has a wean ratio of 95 on 4 calves and a 364 day calving interval.

INDIVIDUAL BULL VIDEOS

AVAILABLE ON

DVAuction

www.dvauction.com

30

HANCOCK HANK 4T13



AAA 20952509 | DOB: 2/8/24

Tail N Emulous 1674 Tail N Emulous 848
 Ideal 1925 Emulous of E1674 68 Emulous 154
 Ideal 5143 of RES Marjorie S A V Resource 1441
 Ideal 9147 of 4355 236
 Mc Cumber Tremendous 2008
 Hancock Majesty 9MT2 6FX11 Mc Cumber 2008 Trmndous 543
 B Pride 3160 of Mc Cumber
 HL Miss EXT Rito 7MC10 5RI3 Rito 707 of Ideal 3407 7075
 HL Miss EXT Rito 5RI3 Double W Miss Ext U003

CED	+10
BW EPD	-1.7
ACT BW	63
ADJ 205	698
VW EPD	+34
MILK	+25
ADJ 365	1063
YW EPD	+59
SC	38.5
PAP	37

CARCASS ULTRASOUND

RIB	IMF	REA
.29	2.83	12.6

A nice calving ease prospect. This bulls dam has always produced calving ease. She has weaned 6 calves with an average wean ratio of 97 and a calving interval of 369 days.



LOT 30 Dam
HL Miss EXT Rito 7MC10 5RI3

31

HANCOCK RITO REVOLVE 4R5



AAA 20952501 | DOB: 1/18/24

R R Rito 707 Rito N Bar
 Rito Revolve OR5 Eriskay of Rollin Rock 3
 Ideal 1456 of 8103 8114 Ideal 8103 of Eldo 5110 5213
 HL Ladies Man 5R11 Ideal 8114 of Eldo 5110 3127
 Hancock Bonnie 1XR10 9S36 Rito 707 of Ideal 3407 7075
 Sinclair Bonnie 9S36 5R5 H L Blkbd 1FX3 8RL1
 Sinclair Bonnie 5R5 106K N Bar Shadow X4124

CED	-1
BW EPD	+2.8
ACT BW	75
ADJ 205	692
WW EPD	+47
MILK	+15
ADJ 365	1090
YW EPD	+82
SC	39
PAP	36

CARCASS ULTRASOUND

RIB	IMF	REA
.31	3.0	12.7

A Rito Revolve OR5 son from an outstanding cow family. He will be a real female maker. His dam has weaned 2 calves with an average wean ratio of 96 and a 348 day calving interval.

Join US Sale Day
Complementary
 LUNCH 11:30



ULTRASOUND
Eric Geving

32

HANCOCK HANK 4T17



AAA 20952475 | DOB: 2/11/24

Tail N Emulous 1674 Tail N Emulous 848
 Ideal 1925 Emulous of E1674 68 Emulous 154
 Ideal 5143 of RES Marjorie S A V Resource 1441
 Sinclair Fortunate Son
 Mc Cumber Fortunate 213 Ideal 9147 of 4355 236
 HL Miss Emulous 7MF1 5V5 Miss Wix 5139 of Mc Cumber
 HL Miss Emulous 5V5 N Bar Emulation Ext A1747
 Sinclair MS Emulous 6P38

CED	+4
BW EPD	+0.3
ACT BW	72
ADJ 205	726
WW EPD	+46
MILK	+27
ADJ 365	1105
YW EPD	+83
SC	36.5
PAP	37

CARCASS ULTRASOUND

RIB	IMF	REA
.29	2.38	12.6

A calving ease prospect. This long bodied bulls dam is a Pathfinder cow that has weaned 6 calves with an average wean ratio of 105 and 370 day calving interval.

33

HANCOCK RENOVATION 4SN7



AAA 20952436 | DOB: 1/13/24

S A V Renown 3439 Rito 707 of Ideal 3407 7075
 S A V Renovation 6822 S A V Blackcap May 4136
 S A V Madame Pride 0151 S A V 004 Density 4336
 S A V Madame Pride 0075
 Rito 707 of Ideal 3407 7075
 HL Thunder Bolt 5R12 Sinclair Blkbird 8RL1 5XB10
 Hancock Lady ORR2 7MF9 Mc Cumber Fortunate 213
 HL Lady 7MF9 5XL8 HL Lady 5XL8

CED	+3
BW EPD	+2.2
ACT BW	76
ADJ 205	720
WW EPD	+59
MILK	+18
ADJ 365	1086
YW EPD	+111
SC	38.5
PAP	39

CARCASS ULTRASOUND

RIB	IMF	REA
.35	3.18	12.5

This bull has a lot of thickness and muscle. He comes from a great maternal cow family, his dam has weaned 3 calves with an average wean ratio of 98 and a calving interval of 342 days.



34

HANCOCK RENOWN 4SR7



AAA 20952442 | DOB: 1/18/24

R R Rito 707
 Rito 707 of Ideal 3407 7075
 Ideal 3407 of 1418 076

S A V Renown 3439

S A V Blackcap May 4136
 S A V 8180 Traveler 004
 S A V May 2397
 Mc Cumber Fortunate 307

HL Fortunate Son 8MS6
 Sinclair MS Emulous 6P38

Hancock Blkbird 1HF1 9MT4
 Hancock Blkbird 9MT4 8RL1
 Sinclair Blkbird 8RL1 5XB10

Mc Cumber Titanium 3127

CED	+0
BW EPD	+2.9
ACT BW	76
ADJ 205	754
WW EPD	+63
MILK	+22
ADJ 365	1202
YW EPD	+117
SC	38.5
PAP	36

A real nice Renown son. Smooth, thick, long bodied. His pedigree is stacked full of maternal greats. His dam has weaned 2 calves for an average wean ratio of 101 and a 375 day calving interval.

CARCASS ULTRASOUND

RIB	IMF	REA
.31	2.82	14.7

35

HANCOCK HANK 4T4



AAA 20952497 | DOB: 1/21/24

Tail N Emulous 1674
 Ideal 1925 Emulous of E1674

Tail N Emulous 848
 68 Emulous 154

S A V Resource 1441
 Ideal 5143 of RES Marjorie
 Ideal 9147 of 4355 236
 Rito 707 of Ideal 3407 7075

S A V Renown 3439

Hancock Promrose 1SR15 3RX2
 Hancock Promrose 1SR15 3RX2
 H L Legacy Ext 0RL3
 H L Primrose 3RX2 9P55
 Sinclair Primrose 9P55 6S9

S A V Blackcap May 4136

CED	+4
BW EPD	+0.3
ACT BW	68
ADJ 205	710
WW EPD	+43
MILK	+26
ADJ 365	1118
YW EPD	+77
SC	37
PAP	40

A calving ease prospect with a nice maternal dam. His dam has weaned 2 calves with an average wean ratio of 100 and a calving interval of 377 days.

CARCASS ULTRASOUND

RIB	IMF	REA
.37	2.78	12.9

36

HANCOCK HANK 4T5



AAA 20952516 | DOB: 1/27/24

Tail N Emulous 1674
 Ideal 1925 Emulous of E1674

Tail N Emulous 848
 68 Emulous 154

S A V Resource 1441
 Ideal 5143 of RES Marjorie
 Ideal 9147 of 4355 236
 Emulation N Bar 5522 Mc

Sinclair Emulation 5522 XP
 N Bar Primrose Y3051

Hancock Miss EXT 9FX25 7MC10
 Hancock Miss EXT 9FX25 7MC10
 HL Miss EXT Rito 7MC10 5RI3
 HL Miss EXT Rito 5RI3

Mc Cumber 2008 Trmndous 543

CED	+5
BW EPD	+0
ACT BW	70
ADJ 205	680
WW EPD	+34
MILK	+24
ADJ 365	987
YW EPD	+59
SC	37
PAP	37

A calving ease prospect. His dam's cow family has calving ease generations deep. His dam has weaned 4 calves with an average ratio of 95 and a 372 day calving interval.

CARCASS ULTRASOUND

RIB	IMF	REA
.35	2.33	12.6



LOT 36 Grand-Dam
HL Miss EXT Rito 7MC10 5RI3

37 HANCOCK EMULATION RITO 4FX2



AAA 20952459 | DOB: 1/5/24

Emulation N Bar 5522 Emulation 31
 Sinclair Emulation 5522 XP Ankony 8F78 Lass 8F275
 N Bar Primrose Y3051 N Bar Emulation EXT
 HL Ladies Man 5R11 N Bar Primrose 2429
 Hancock Majesty 2XR2 7MT9 Rito 707 of Ideal 3407 7075
 H L Blkbd 1FX3 8RL1
 H L Lady 4PV1 7R30
 Mc Cumber Titanium 3127

CED	+3
BW EPD	+1.8
ACT BW	67
ADJ 205	669
WW EPD	+44
MILK	+16
ADJ 365	1019
YW EPD	+78
SC	36
PAP	37

Son of Emulation 5522XP. This bulls sire has done an outstanding job in our herd for years. He has left us with outstanding females. This bulls dam a two-year-old heifer with a wean ratio of 100.

CARCASS ULTRASOUND

RIB	IMF	REA
.21	3.63	12.2

38 HANCOCK HANK 4T7



AAA 20952517 | DOB: 1/29/24

Tail N Emulous 1674 Tail N Emulous 848
 Ideal 1925 Emulous of E1674 68 Emulous 154
 Ideal 5143 of RES Marjorie S A V Resource 1441
 Mc Cumber Titanium 3127 Ideal 9147 of 4355 236
 Sinclair Fortunate Son
 Hancock Bonnie 9MT14 5V3 Miss Wix 926 OF Mc Cumber
 HL Bonnie 5V3 N Bar Emulation Ext A1747
 Sinclair Bonnie 9S36 5R5

CED	+0
BW EPD	+1.8
ACT BW	81
ADJ 205	726
WW EPD	+48
MILK	+25
ADJ 365	1158
YW EPD	+88
SC	41
PAP	36

A stout thick son of 1925. His dam does a great job weaning 4 calves with an average wean ratio of 103 and calving interval of 373 days.

CARCASS ULTRASOUND

RIB	IMF	REA
.27	3.22	13.5

We Strive TO BREED EASY FLESHING
 MATERNAL GENETICS THAT *Perform!*



39

HANCOCK HANK 4T38

AAA 20952470 | DOB: 2/24/24



Tail N Emulous 1674
Ideal 1925 Emulous of E1674
Ideal 5143 of RES Marjorie
Rito 707 of Ideal 3407 7075
H L Primrose 4RI4 9P50
Sinclair Primrose 9P50 6S9

Tail N Emulous 848
68 Emulous 154
S A V Resource 1441
Ideal 9147 of 4355 236
R R Rito 707
Ideal 3407 of 1418 076
N Bar Prime Time D806
Sinclair Primrose 6S9 4P83

CED	-1
BW EPD	+2.1
ACT BW	82
ADJ 205	727
WW EPD	+45
MILK	+25
ADJ 365	1247
YW EPD	+88
SC	38
PAP	35

CARCASS ULTRASOUND

RIB	IMF	REA
.40	3.96	11.2



► *This bull has a lot of length and thickness. He comes from a great cow family. His dam has done a great job weaning 9 calves with an average wean ratio of 105 and 365 day calving interval. Pathfinder cow.*

40

HANCOCK HANK 4T41

AAA 20952498 | DOB: 3/1/24



Tail N Emulous 1674
Ideal 1925 Emulous of E1674
Ideal 5143 of RES Marjorie
S A V Renown 3439
Hancock Blackbird 1SR16 7XR7
HL Blackbird 7XR7 8RL1

Tail N Emulous 848
68 Emulous 154
S A V Resource 1441
Ideal 9147 of 4355 236
Rito 707 of Ideal 3407 7075
S A V Blackcap May 4136
HL Ladies Man 5RI1
Sinclair Blkbird 8RL1 5XB10

CED	+2
BW EPD	+1.1
ACT BW	70
ADJ 205	687
WW EPD	+44
MILK	+26
ADJ 365	1148
YW EPD	+81
SC	38.5
PAP	36

CARCASS ULTRASOUND

RIB	IMF	REA
.25	3.45	12.9

► *If you are looking for a thick meat wagon bull, this guy is thick. Moderate framed. His dam comes from an outstanding cow family weaning 2 calves with an average wean ratio of 101 and a calving interval of 380 days.*

BREEDING CATTLE
IN MODERATION
No Extremes
WILL RESULT IN
FUNCTIONAL CATTLE.



41

HANCOCK HANK 4T28

AAA 20952472 | DOB: 2/17/24



Tail N Emulous 1674
Ideal 1925 Emulous of E1674
Ideal 5143 of RES Marjorie
Sinclair Emulation XXP
HL Blkcap 6XL4 8XE36

Tail N Emulous 848
68 Emulous 154
S A V Resource 1441
Ideal 9147 of 4355 236
N Bar Emulation EXT
N Bar Primrose Y3051
Sinclair Excellency 5X25
Sinclair Blkcap 8XE36 2Z14
Sinclair Blackcap 2Z14 0953

CED	+4
BW EPD	+0.4
ACT BW	76
ADJ 205	679
WW EPD	+38
MILK	+25
ADJ 365	1132
YW EPD	+73
SC	36.5
PAP	37

CARCASS ULTRASOUND

RIB	IMF	REA
.36	4.27	11.4

► This bull has a lot of length. His dam is loaded with maternal traits. A daughter of Emulation XXP weaning 7 calves with an average ratio of 98 and 368 day calving interval.



42

HANCOCK HANK 4T19

AAA 20952458 | DOB: 2/12/24



Tail N Emulous 1674
Ideal 1925 Emulous of E1674
Ideal 5143 of RES Marjorie
S A V Renown 3439
Hancock Majesty 2SR8 2PV5
H L Lady 2PV5 7R30 853

Tail N Emulous 848
68 Emulous 154
S A V Resource 1441
Ideal 9147 of 4355 236
Rito 707 of Ideal 3407 7075
S A V Blackcap May 4136
Sinclair Net Present Value
Sinclair Lady 7R30 853

CED	+2
BW EPD	+1.1
ACT BW	69
ADJ 205	758
WW EPD	+49
MILK	+28
ADJ 365	1132
YW EPD	+87
SC	37.5
PAP	37

CARCASS ULTRASOUND

RIB	IMF	REA
.25	3.47	14.2

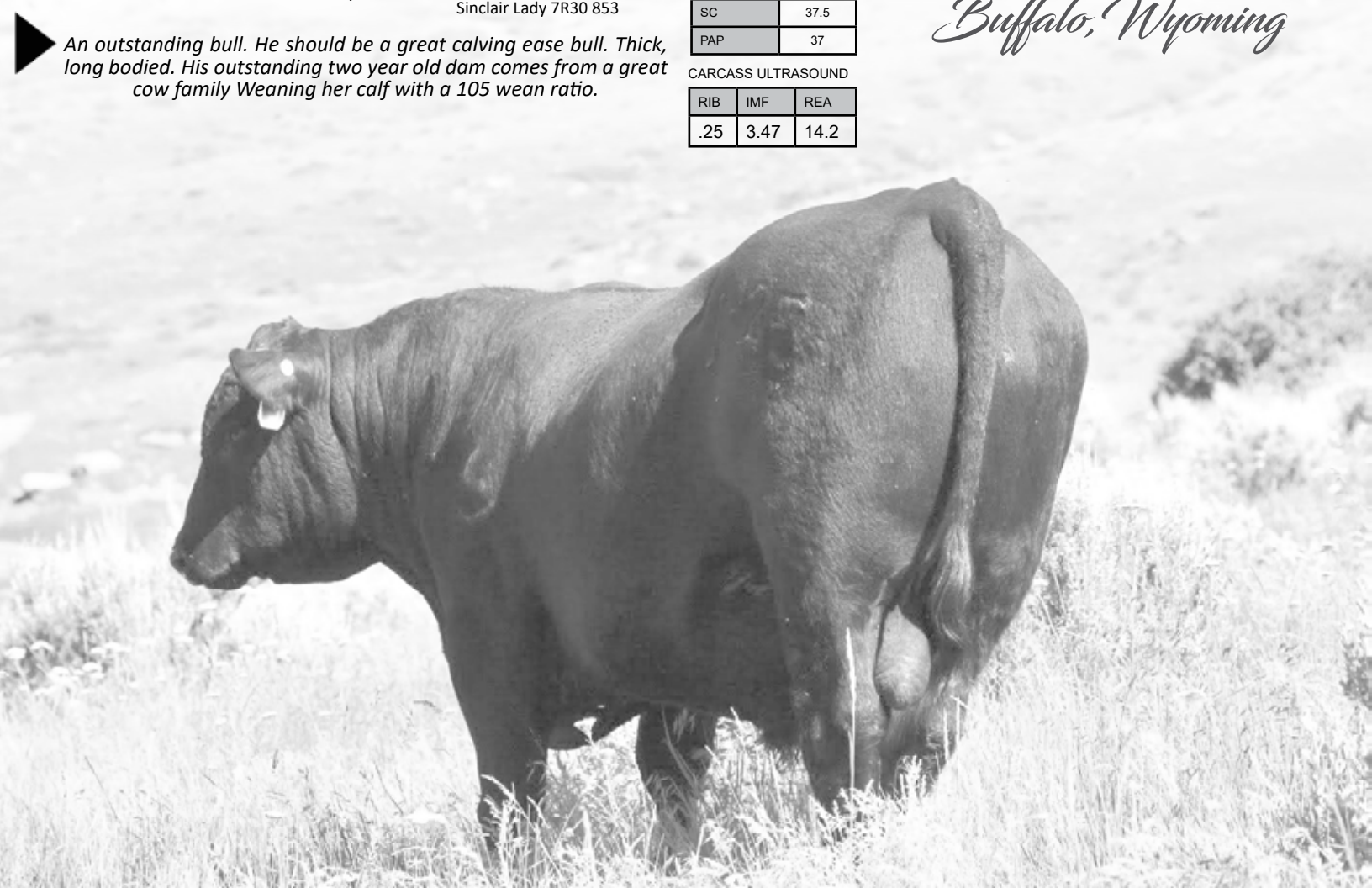
► An outstanding bull. He should be a great calving ease bull. Thick, long bodied. His outstanding two year old dam comes from a great cow family Weaning her calf with a 105 wean ratio.

MARCH 15TH

SALE TIME 1PM

VIEW THE BULLS AS EARLY AS THE
AFTERNOON OF MARCH 14TH AT BUFFALO
LIVESTOCK Marketing

Buffalo, Wyoming



43

HANCOCK EMULATE 4E1

AAA 20952461 | DOB: 1/12/24



Sinclair Extra 4X13 N Bar Emulation EXT
 Sinclair Emulate 7XT28 N Bar Lady Ida S C C 2P37
 Sinclair Blackbird 20F3 6417 Emulation N Bar 5522
 HL Ladies Man 5R11 Ideal 6417 of 1418 2459
 Rito 707 of Ideal 3407 7075
 Hancock Blackbird 2XR9 C206 H L Bkibd 1FX3 8RL1
 Pine Coulee Blackbird C206 S A V Resource 1441
 ICC Blackbird 9665

CED	+2
BW EPD	+2.5
ACT BW	71
ADJ 205	653
WW EPD	+49
MILK	+19
ADJ 365	1131
YW EPD	+85
SC	36
PAP	38



▶ *A nice bull calf out of a first calf heifer. A wean ratio of 95. Nice cow family.*

CARCASS ULTRASOUND

RIB	IMF	REA
.29	3.28	12.7

44

HANCOCK RITO REVOLVE 4R1

AAA 20952434 | DOB: 1/12/24



R R Rito 707 Rito N Bar
 Rito Revolve OR5 Eriskay of Rollin Rock 3
 Ideal 1456 of 8103 8114 Ideal 8103 of Eldo 5110 5213
 Sinclair Emulation 5522 XP Ideal 8114 of Eldo 5110 3127
 Hancock Blackfoot 0FX6 7CR1 Emulation N Bar 5522
 N Bar Primrose Y3051
 HL Blackfoot 7CR1 Pine Coulee Advance C364
 Pine Coulee Blackfoot C129

CED	+0
BW EPD	+2.7
ACT BW	73
ADJ 205	615
WW EPD	+34
MILK	+16
ADJ 365	1015
YW EPD	+63
SC	40
PAP	38

▶ *This bull is thick. Moderate and unbelievable thick. A Rito Revolve OR5 son. His pedigree is extremely maternal. His dam has 1 son in a seed stock herd. She has weaned 3 calves with a wean ratio of 96 and a calving interval of 370 days.*

CARCASS ULTRASOUND

RIB	IMF	REA
.28	2.22	13.5

DVAuction

www.dvauction.com

Watch & Bid online for FREE!

Can't make the sale?
Let DVAuction bring the sale to you!

Busy during the sale?
Let DVAuction represent your bid!

Visit www.dvauction.com and Register!
 It's as easy as 1, 2, 3...

1. Create an account at www.dvauction.com under the "create new account" tab
2. Apply for bidding by clicking "apply for bidding" in the upper left corner of your screen, at least 24 hours prior to the auction
3. Tune into the sale and make your purchases!

For General Questions Please Contact Our Office:
 (402) 316-5460 or support@dvauction.com
*High Speed Internet Access Required



45

HANCOCK HANK 4T35

AAA 20952468 | DOB: 2/21/24



Tail N Emulous 848
 Tail N Emulous 1674
 Ideal 1925 Emulous of E1674
 Ideal 5143 of RES Marjorie
 Sinclair Emulation 5522 XP
 H L Lady 4FX9 2PV2
 H L Lady 2PV2 7R30 853

S A V Resource 1441
 68 Emulous 154
 Ideal 9147 of 4355 236
 Emulation N Bar 5522
 N Bar Primrose Y3051
 Sinclair Net Present Value
 Sinclair Lady 7R30 853

CED	+4
BW EPD	+0.3
ACT BW	72
ADJ 205	660
WW EPD	+32
MILK	+30
ADJ 365	1100
YW EPD	+60
SC	36
PAP	39

CARCASS ULTRASOUND

RIB	IMF	REA
.35	2.68	12.7



What a great bull. Calving ease prospect. Thick and long bodied. This cow Family does a great job. His dam is a Pathfinder cow weaning 9 calves with a wean ratio of 106 and a calving interval of 370 days.



"I APPRECIATE THE OPPORTUNITY TO PURCHASE HANCOCK BULLS.

The reasons I recommend them are:

1. These bulls come from proven bloodlines which provide reliability and predictability in their offspring.
2. The bulls I purchased have excellent dispositions which is passed on to their calves.
3. Maternal traits are very strong and offspring are excellent milkers
4. I have observed in our cattle how the Hancock bulls clean up udders with the first generation.
5. The Hancock bulls have proven to be easy fleshing a trait they pass on to their offspring."

Bonnie Bath - Rancher
 Cheyenne, WY

46

HANCOCK EMULATION 4FX7

AAA 20952462 | DOB: 1/25/24



Emulation 31
 Emulation N Bar 5522
 Anky 8F78 Lass 8F275
 Sinclair Emulation 5522 XP
 N Bar Emulation EXT
 N Bar Primrose Y3051
 N Bar Primrose 2429
 Rito 707 of Ideal 3407 7075
 HL Ladies Man 5R11
 H L Blkbd 1FX3 8RL1
 Hancock Ms Emulous 2XR6 7MF1
 Mc Cumber Fortunate 213
 HL Miss Emulous 7MF1 5V5
 HL Miss Emulous 5V5

CED	+2
BW EPD	+1.9
ACT BW	69
ADJ 205	631
WW EPD	+43
MILK	+17
ADJ 365	1106
YW EPD	+76
SC	35
PAP	38

CARCASS ULTRASOUND

RIB	IMF	REA
.28	3.08	12.4



A long bodied big boned bull out of a two year-old heifer with a wean ratio of 90.

47

HANCOCK HANK 4T40

AAA 20952428 | DOB: 2/27/24



	Tail N Emulous 848
Tail N Emulous 1674	68 Emulous 154
Ideal 1925 Emulous of E1674	S A V Resource 1441
Ideal 5143 of RES Marjorie	Ideal 9147 of 4355 236
	Emulation N Bar 5522
N Bar Emulation EXT	N Bar Primrose 2424
Hancock Black Annie 1X7 C53	Coleman Knight 209
Pine Coulee Black Annie C53	Pine Coulee Black Annie A6

CED	+1
BW EPD	+1.6
ACT BW	77
ADJ 205	630
WW EPD	+32
MILK	+26
ADJ 365	1060
YW EPD	+63
SC	35.5
PAP	37



▶ *A long smooth bull out of an EXT daughter. EXT produces nice females. His dam has weaned 2 calves with an average wean ratio of 95 and a 352 day calving interval.*

CARCASS ULTRASOUND

RIB	IMF	REA
.34	3.36	11.2

48

HANCOCK HANK 4T30

AAA 20952488 | DOB: 2/17/24



	Tail N Emulous 848
Tail N Emulous 1674	68 Emulous 154
Ideal 1925 Emulous of E1674	S A V Resource 1441
Ideal 5143 of RES Marjorie	Ideal 9147 of 4355 236
	Sinclair Fortunate Son
Mc Cumber Titanium 3127	Miss Wix 926 OF Mc Cumber
Hancock Primrose 9MT3 9P50	N Bar Prime Time D806
Sinclair Primrose 9P50 659	Sinclair Primrose 659 4P83

CED	+2
BW EPD	+1.3
ACT BW	72
ADJ 205	600
WW EPD	+35
MILK	+24
ADJ 365	1059
YW EPD	+68
SC	36
PAP	35

FREE DELIVERY!

to central points within 500 miles, after 500 miles delivery at cost.

****Anyone picking up their bulls sale day will receive \$100 back per bull.***

▶ *A smooth made long bodied bull out of a maternal cow family. His dam has weaned 4 calves with a wean ratio of 102 and a 369 day calving interval.*

CARCASS ULTRASOUND

RIB	IMF	REA
.18	1.94	11.5





HANCOCK LIVESTOCK

Charles Hancock

P.O. Box 435

Basin, WY 82410

307-250-6900

Email: hanstock76@gmail.com

www.hancocklivestock.com

MARCH 15TH
SALE TIME 1PM

VIEW THE BULLS AS EARLY AS THE
AFTERNOON OF MARCH 14TH AT BUFFALO
LIVESTOCK MARKETING

Buffalo, Wyoming

This sale will be broadcast live on the internet.

DVAuction
Broadcasting Real-Time Auctions

Real time bidding & proxy bidding available.

