

TIPTON RANCH

**Coming
2 yr. Old Hereford Bulls
(Horned & Polled)**

**Selling at 1:00pm
February 19th, 2025**

**Buffalo Livestock Market
Buffalo, Wyoming**



Mike's Cell: 308-770-0080
Belinda's Cell: 308-770-0090
House: 307-737-0608

Buffalo Livestock Market:

307-684-0789



Taylor Snook: 307-290-2273
Austin Snook: 307-290-2161

Tipton Ranch
735 Dow Prong Rd.
Wyarano, WY 82845

To:

This year we are offering both spring and summer born coming 2-year-old bulls.

This is the 52nd consecutive year of selling our home-raised bulls.

These bulls represent the breeding decisions we have made over the last 54 years. Those decisions were based on all segments of our operation, including the commercial cows (black and red), the yearling operation, our 4,000 head feed yard, the actual harvest data (not only from our own cattle, but that of the customer cattle sired by our bulls), and most importantly - the needs of the people we provide Bull Genetics to.

The cattle that we raise are targeted to the same goal as most commercial operations and that is "profit."

Our program is documented with years of comparison and real world data - not just some computer whiz sitting behind a desk telling the industry your yearling steers will weigh 125# more in the fall based on his calculations.

There really is a difference between ours and theirs - the baldy and brockle faced females sired by our bulls prove it every year to our customers.

About our bulls:

- As in the past, these bulls have been running out and have been developed with minimal supplement.
- Complete vaccination program: 5-way virus - Pasturella, 7-way Clostridial, H-Somnus, Foot-Rot, Pinkeye, poured cleanup and dectomax injectable.
- Sight unseen purchase guarantee
- Our guarantee is strictly no nonsense. We expect these bulls to do their job each breeding season. The 1st breeding season is unconditionally guaranteed.

Thank you for considering the genetics we have to offer this year. If you have any questions, give us a call.

Hope to see you February 19th at 1:00 at Buffalo Livestock Market!



Tipton Ranch Steer out of one of our home-raised bulls and home-raised cows. This is one of the 7 Champion and 5 Reserve Champion Hereford Steers at the Wyoming State Fair, all fed and shown by our grandchildren.

3151**6/16 Act. BW 73**

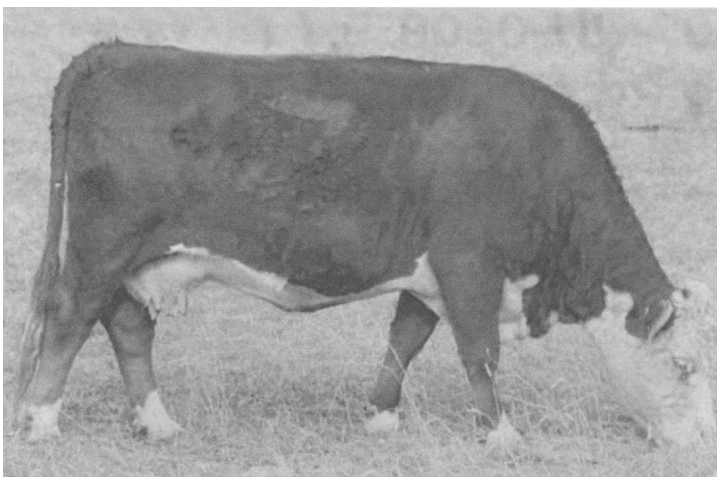
L3 RAMBOY 821ET
 4T CHRIS 7153
 4T MARTHA 4085
 L3 DESERT WELLMAN 124
 4T JUNIOR LADY 8151
 4T 3027 GIRL 5012

BW 3.0
 WW 45
 YW 78
 M 30
 MG 54
 REA .46
 MARB .11
 BMI 469
 CHB 119

3306**3/12 Act. BW 70**

L3 DESERT WELLMAN 124
 4T JUNIOR 3024
 4T 670 LADY 911
 4T 2311 8075
 4T 2311 LADY 1526
 4T 3001 LADY 5157

BW 1.6
 WW 51
 YW 89
 M 29
 MG 55
 REA .42
 MARB .18
 BMI 476
 CHB 123



Trouble Free? Functional? Longevity? Here's one of our 15-year-old cows who raised a big, well-above average calf every year. She's an easy keeper, has a totally trouble free udder, and she's pregnant again.

Here are some of the sires represented by the bulls in this catalog:

**UPS DOMINO 3027**

- Easy calving
- Really good daughters (great udders and milk)
- Lots of growth & actual carcass merit
- Calves by 3027 and his sons have good feet and bone
- The 3027 line has well above average CHB numbers
- His BMI (Baldy Maternal Index) is off the charts good

**4T JUNIOR 3024**

- We raised this bull and he has done it all-calving ease, lots of growth, great length and volume in an athletic package
- He and his sons generate a lot of performance in their steers, heifers, and bulls
- 3024 offspring really shine in the feedlot because of their efficiency and tremendous ribeyes. They typically grade high choice & low prime without any yield grade 4's when harvested.
- His females are easy keeping with good pigment
- His sons are power bulls



4T 303 Lad 6068

- Another Herd Bull we raised - his genetics are chock full of super good uddered cattle with good milk, lots of pigment and true length of body
- His sons are stout and his daughters are very feminine
- The steers and heifers sired by 6068 and his sons that we fed out were well above average in gain and efficiency. Their carcass merit always added a premium on the grid



Ways to Bid on these Bulls

- Be on the seats February 19th at 1:00pm in the Buffalo Livestock Market
- Sign up & bid on [Cattle USA](#).
For more information, contact 307-684-0789
- Contact Tipton Ranch:
307-737-0608 or 308-770-0080
- Contact Taylor Snook at
307-290-2273
- Contact Austin Snook at
307-290-2161
- Contact Buffalo Livestock Market at **307-684-0789**

3134

4/11 Act. BW 79



JH DESERT VISION 303
4T 303 LAD 6068
4T JUNIOR LADY 3028
UPS DOMINO 3027
4T 3027 LADY 6017
4T CHRISTINA 4049

BW 1.4
WW 44
YW 74
M 30
MG 53
REA .31
MARB .22
BMI 489
CHB 120

3135

4/16 Act. BW 81



L3 RAMBOY 821ET
4T CHRIS 7153
4T MARTHA 4085
L3 RAMBOY 821ET
4T 821 LADY 4154
4T GENETIC LADY 612

BW 2.4
WW 42
YW 73
M 26
MG 50
REA .52
MARB .10
BMI 410
CHB 119

3144

2/25 Act. BW 79



JH DESERT VISION 303
4T 303 LAD 6068
4T JUNIOR LADY 3028
L3 RAMBOY 821ET
4T 821 LADY 7123
4T ROSEY LADY 3135

BW 2.5
WW 43
YW 75
M 29
MG 53
REA .35
MARB .11
BMI 449
CHB 118

3125**4/2 Act. BW 78**

L3 RAMBOY 821ET
 4T CHRIS 7153
 4T MARTHA 4085
 JDH 212 VICTOR 40E ET
 SNOWSHOE LADY F 51 H 53
 SNOWSHOE 19C LADY F 51

BW 3.5
 WW 48
 YW 86
 M 25
 MG 50
 REA .57
 MARB .14
 BMI 459
 CHB 128

4T Chris 7153

We raised this herd bull - he is a ground covering breeding machine. His offspring tell it all.

- Easy calving
- Lots of pigment
- Big weaning weights
- Big time feedlot performance
- Daughters are super good uddered and really milky
- As tough & sound as they get

3127**4/2 Act. BW 80**

L3 RAM BOY 821ET
 4T CHRIS 7153
 4T MARTHA 4085
 4T VISION 2014
 4T 017 GIRL 4052
 4T 026 GIRL 2087

BW 2.6
 WW 44
 YW 74
 M 25
 MG 46
 REA .49
 MARB .12
 BMI 424
 CHB 118

3102**3/4 Act. BW 66**

L3 DESERT WELLMAN 124
 4T JUNIOR 3024
 4T 670 LADY 911
 PYRAMID 3027 DOMINO 1109
 4T 1109 LADY 1439
 4T RIBBON 6008

BW 0.9
 WW 50
 YW 91
 M 32
 MG 59
 RE .48
 MARB .15
 BMI 465
 CHB 140

3133**4/11 Act. BW 77**

L3 RAMBOY 821ET
 4T CHRIS 7153
 4T MARTHA 4085
 4T 3024 LAD 7015
 4T 7015 LADY 0034
 4T 5005 LADY 7042

BW 3.2
 WW 49
 YW 85
 M 27
 MG 52
 REA .67
 MARB .23
 BMI 347
 CHB 141

3103**3/7 Act. BW 67**

CLI DOMINO 9126J
 UPS DOMINO 3027
 UPS MISS DIAMOND 1353
 4T JUNIOR 3024
 4T 3024 LADY 1406
 4T 3024 LADY 8012

BW 0.4
 WW 49
 YW 83
 M 33
 MG 58
 RE .44
 MARB .27
 BMI 542
 CHB 132

3105**3/12 Act. BW 69**

CL1 DOMINO 9126J
 UPS DOMINO 3027
 UPS MISS DIAMOND 1353
 4T 3024 LAD 7015
 4T 7015 LADY 1437
 4T 5002 LADY 8208

BW 1.2
 WW 52
 YW 87
 M 32
 MG 59
 REA .43
 MARB .30
 BMI 534
 CHB 134

3115**3/26 Act. BW 77**

L3 RAMBOY 821ET
 4T CHRIS 7153
 4T MARTHA 4085
 4T JUNIOR 3024
 4T 3024 LADY 8043
 4T ROSEY LADY 3008

BW 2.3
 WW 43
 YW 74
 M 26
 MG 49
 REA .48
 MARB .10
 BMI 445
 CHB 118

3107**3/15 Act. BW 70**

L3 DESERT WELLMAN 124
 4T JUNIOR 3024
 4T 670 LADY 911
 4T 017 LAD 5030
 4T 5030 LADY 1402
 4T 670 LADY 5037ET

BW 2.0
 WW 48
 YW 82
 M 29
 MG 55
 REA .47
 MARB .10
 BMI 456
 CHB 119

3118**3/29 Act. BW 76**

L3 DESERT WELLMAN 124
 4T JUNIOR 3024
 4T 670 LADY 911
 SHF RIBEYE M 326 R 117
 4T RIBBON 5080
 4T 679 LADY 030

BW 2.2
 WW 49
 YW 88
 M 28
 MG 55
 REA .44
 MARB .13
 BMI 478
 CHB 120

3109**3/20 Act. BW 76**

CL1 DOMINO 9126J
 UPS DOMINO 3027
 UPS MISS DIAMOND 1353
 L3 GENETIC KING 169
 4T GENETIC LADY 901
 L3 LADY ODESSA 665

BW 1.1
 WW 44
 YW 75
 M 29
 MG 52
 REA .29
 MARB .33
 BMI 497
 CHB 131

3120**3/29 Act. BW 70**

4T 303 LAD 6068
 4T 6068 LAD 0188
 4T 821 LADY 2080
 4T 017 LAD 5030
 4T 5030 LADY 1486
 4T MARTHA 5026

BW 1.8
 WW 48
 YW 85
 M 29
 MG 56
 REA .46
 MARB .17
 BMI 481
 CHB 121